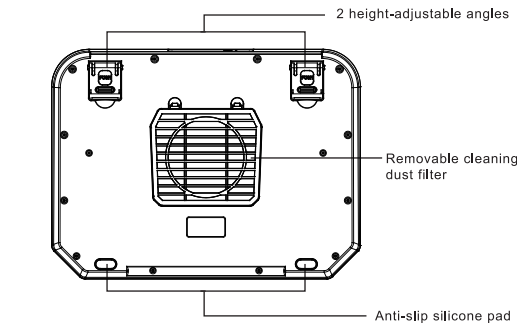
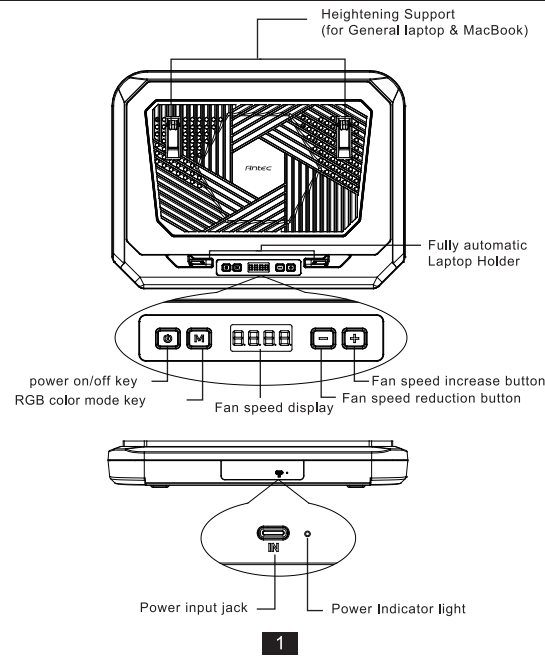


1 CONTENTS

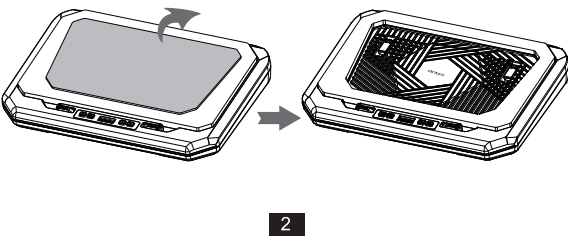
TurboFlow RGB Laptop Cooling Pad	-----1PCS
Power Cable	-----1PCS
Manual	-----1PCS

2 PRODUCT DETAIL

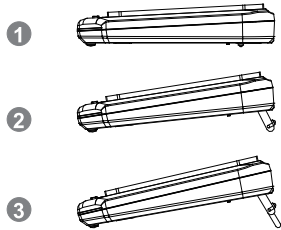


3 INSTALLATION

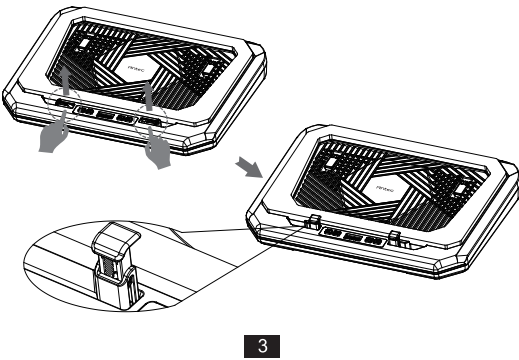
1. Take out the product and related accessories.
2. Remove the memory foam in the middle, arrange the sealed memory foam and put it into the groove on the front of the product (as shown in the picture below).



3. Adjust the height of the tripod to an angle suitable for your use. (1-3 angle adjustments).

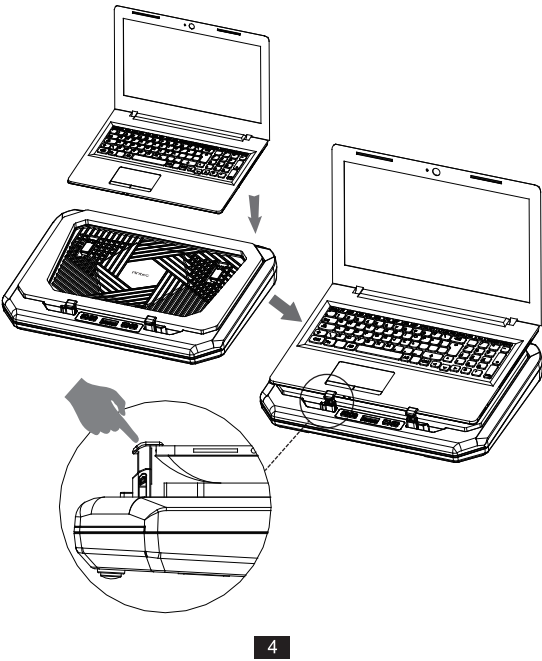


4. Rotate and open the right baffle to the maximum (90 degrees), and pull the baffle to confirm whether the baffle will automatically retract to the starting height. (The bezel can automatically adjust the height according to the thickness of the laptop) (As shown in the picture below).

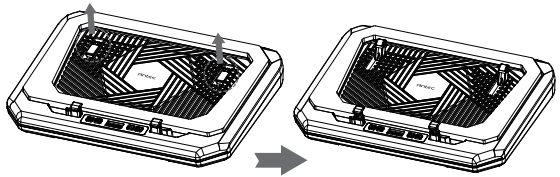


5. Place the gaming laptop (or laptop with an air inlet at the bottom of the laptop) flat on the memory foam, center the left and right sides of the laptop, and the front end of the laptop should be against the silicone on the inside of the laptop holder.

The laptop holder will automatically adjust the height of the bezel according to the thickness of the laptop so that it can fully engage the top surface of the computer (as shown in the picture below).

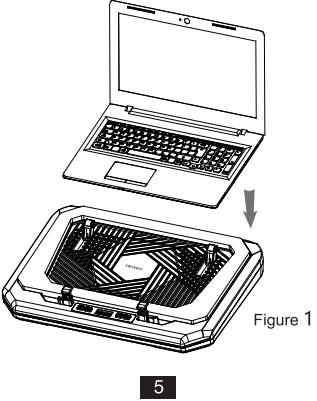


- 5.1 Press the method shown in the figure to rotate and open the left and right Heightening Support to the maximum angle (approximately 110 degrees).

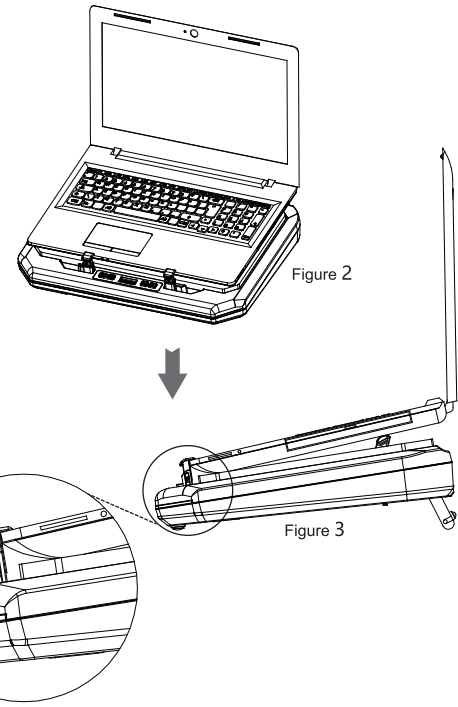


- 5.2 Place a general laptop (notebook with bottom air inlet or laptop without air inlet) against the left and right baffles on the inner silicone, and then put the bottom rear end of the notebook computer on the silicone pad of the rear end Heightening Support and place the notebook computer in the middle.

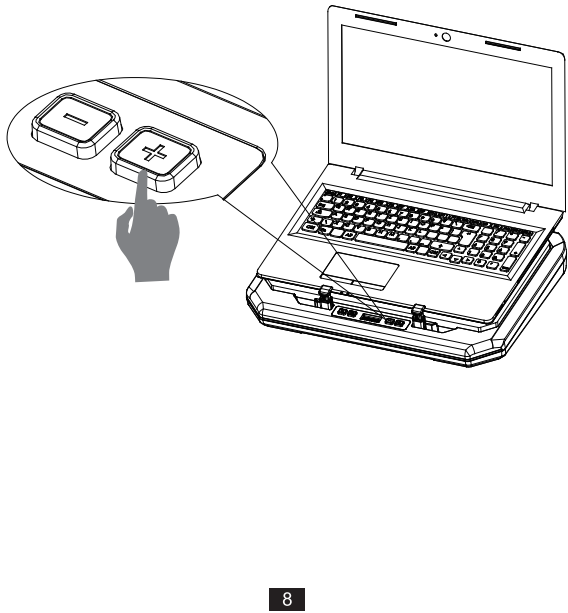
The bezels will adjust the height of the left and right bezels according to the thickness of the notebook computer so that they are completely pressed against the computer surface (as shown in Figure 2 and Figure 3 below).



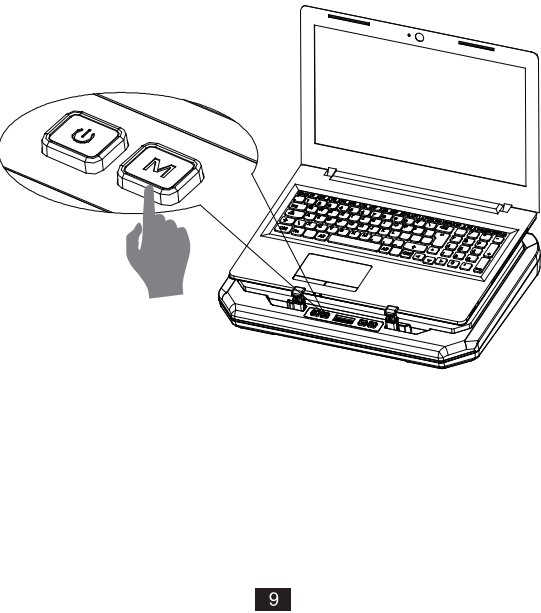
6. Plug one end of the USB power cable into the computer and the other end into the power jack of the product. The power indicator light will be solid green (as shown in the picture below)



8. After turning on the computer, the user adjusts the fan cooling speed to a suitable speed according to the needs of the laptop (the fan is in single-click adjustment mode: The "+" sign means the speed increases, the "-" sign means the speed decreases, the initial speed is 800rpm, from 800 to 2600rpm, it increases or decreases by 100rpm each time you press it. If you press and hold, it will increase to the highest speed or decrease until the initial speed. (As shown in the picture below).

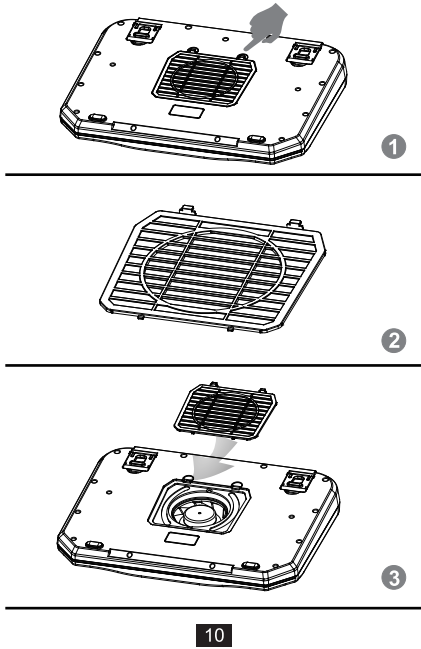


9. Adjust to your preferred RGB color mode (as shown in the picture below): Press the "M" key to adjust the mode: Wave ->RGB Spectrum->Pulse->Blink->Full Light->Random and other cycles! The lighting of this product has a memory function. After the startup screen, the last RGB mode is restored. Press and hold the "M" key for 2 seconds to turn off or turn on the RGB lighting.



4 CLEAN DUST FILTER

1. Open the two buckles on the dustproof cover as shown in Figure 1, and take out the dustproof cover.
 2. Rinse the dust filter with water and dry it as shown in Figure 2.
 3. Cover the dust cover as shown in Figure 3.
- (Based on personal usage environment and scenarios, it is recommended to clean once every 3 months.)



Antec®
BELIEVE IT

www.Antec.com

All rights reserved. Specifications are subject to change without prior notice. Actual products and accessories may differ from illustrations. Omissions and printing errors excepted. Content of delivery might differ in different countries or areas. Some trademarks may be claimed as the property of others.

V1.0

© 1986 - 2026 Antec Inc. All rights reserved.