

# COMPELLING PERFORMANCE

## MID-TOWER CHASSIS



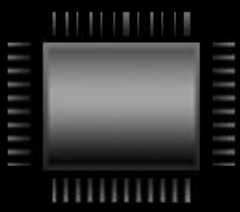
4mm  
THICK TEMPERED GLASS



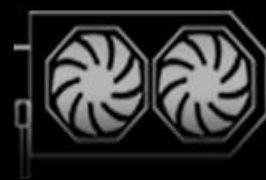
Tool-Less Drive Bays  
FLEXIBLE HARD DRIVE  
MOUNTING OPTIONS



White LED FANS X3 (INCLUDED)



Motherboard Support  
ATX MICRO-ATX ITX



Room For Graphics Cards Up To 390mm



Support For Liquid Cooling Radiators  
(240 mm top (Limited), 360 mm front, 120 mm rear)



2.5" SSD Drive Bays x 4



3.5" HDD Drive Bays x 2



20 mm Cable Management Space  
Behind The Motherboard

## DESIGN CONCEPT

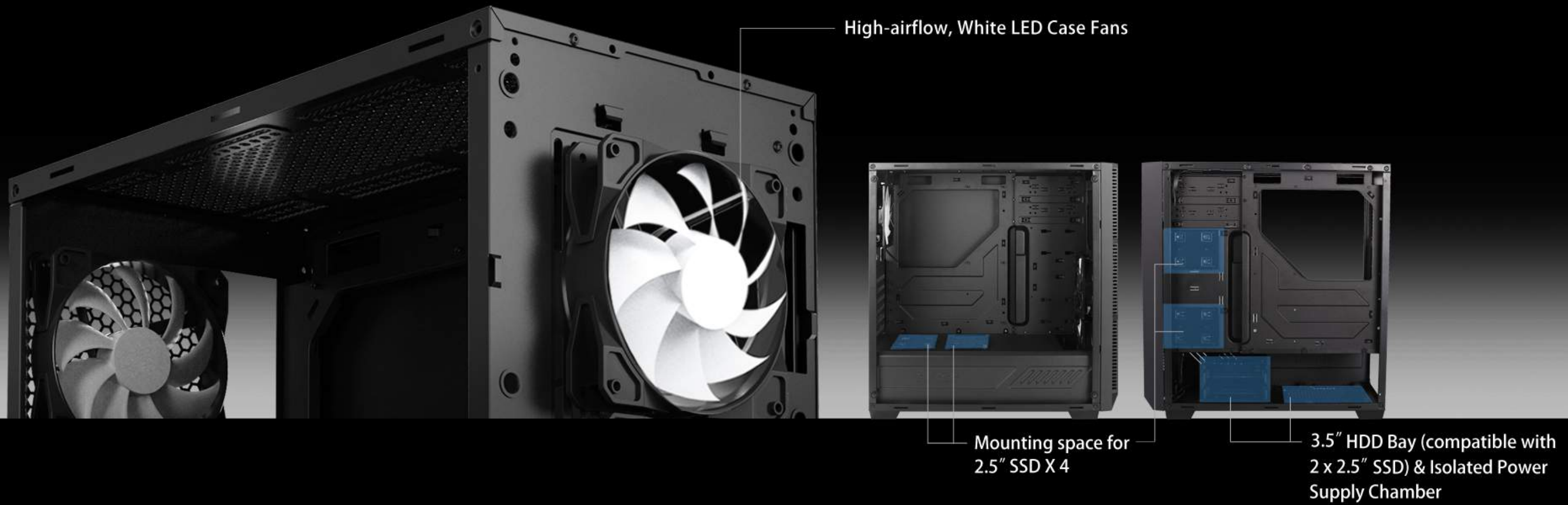
With clean lines and an interior designed around performance, the Antec P8 is a distinctly modern addition to the acclaimed Performance Series. Beyond the minimalist yet functional design, the layout of the P8 makes it simple to build, maintain, and cool and efficient and powerful system. And for high-end configurations, the P8 handles graphics cards up to 390mm long and boasts water cooling options to bring out your system's best performance.

Antec

• ILLUMINATED FRONT LOGO

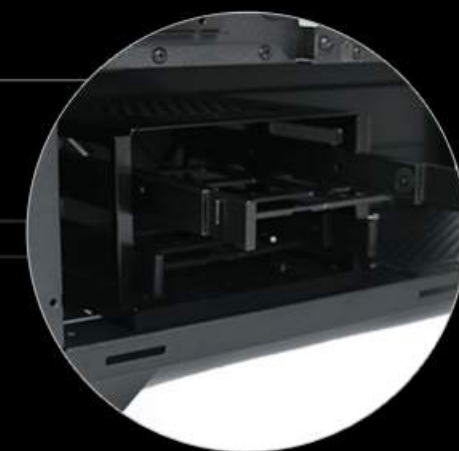


Choose your own cooling system configuration with 120/140 mm fan mounts for flexibility and ease of use.  
Isolated PSU compartment provides easy cable routing and extra noise-dampening.



## Removable 3.5" HDD Bay

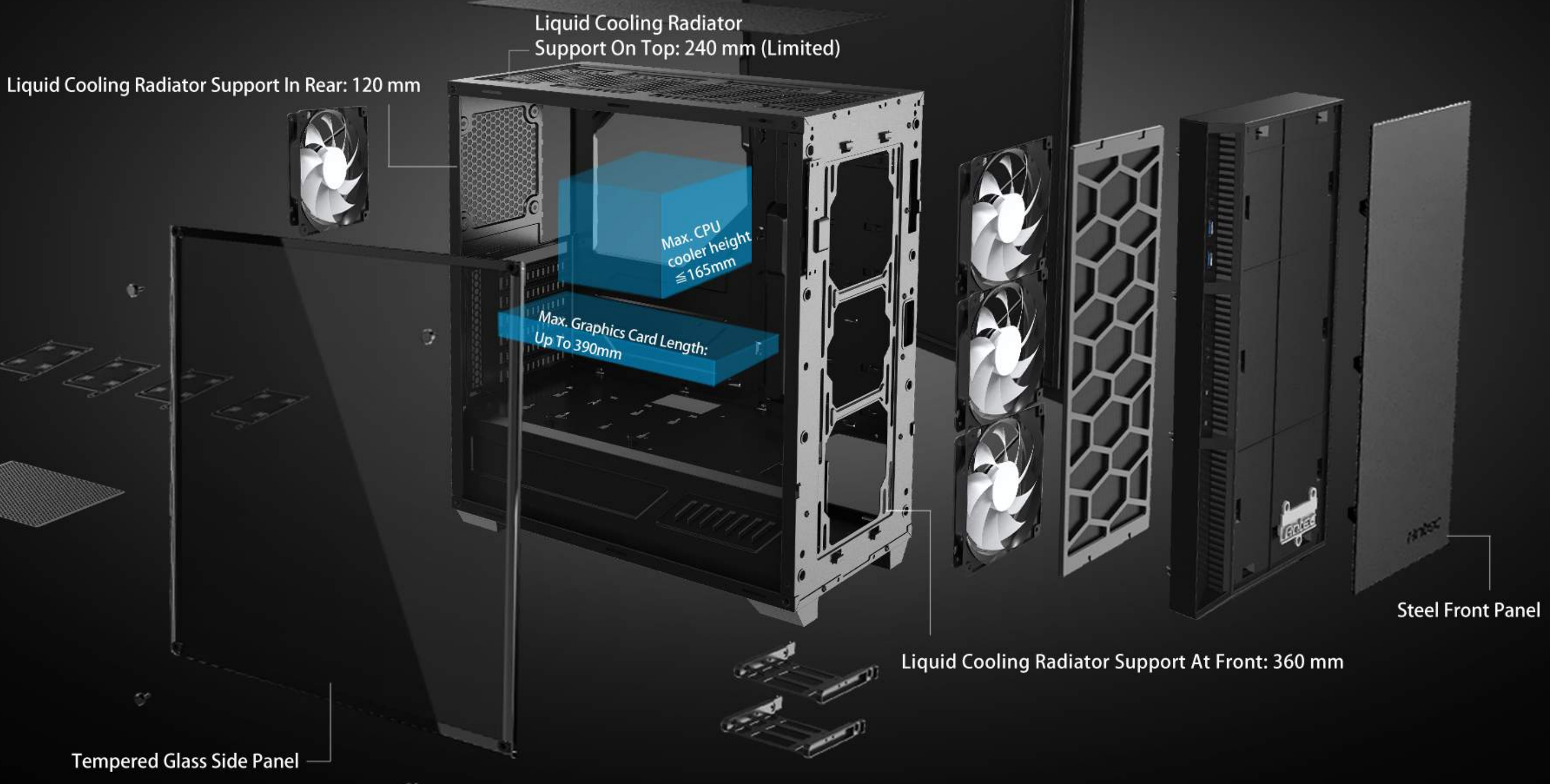
Flexible hard drive mounting options



Tool-less hard drive bays  
and drive cages



# Spacious Interior



Includes High Static Pressure  
White LED Fans x 3  
Front x 2 , Rear x 1



7 PCI-E Slots



Magnetic Top Air Filter



Additional Tempered Glass Side Panel Available  
As An Accessory (Sold Separately)



# CREATE THE PERFECT BUILD FOR EVERY ENVIRONMENT

PLAY



WORK



Modding work crafted by FUXK





# BELIEVE IT

## P8

COMPELLING PERFORMANCE

### CASE SPECIFICATION

|                         |   |
|-------------------------|---|
| Dimensions              | 443 x 210 x 470 mm (HWD)  |
| Form Factor             | Mid Tower   |
| Materials               | Steel/ABS   |
| Mainboard Support       | ATX, Micro-ATX, ITX   |
| Front Access & Controls | 2 x USB 3.0, POWER, RESET, MIC/AUDIO  |
| Side Panel              | Tempered Glass (Single Side)<br>*Additional tempered glass side panel available as an accessory (sold separately) |

### EXPANSION & DRIVE BAYS

|                         |   |
|-------------------------|---|
| Expansion Slots         | 7 |
| 5.25"                   | 0 |
| 2.5"/3.5" (Convertible) | 2 |
| 2.5"                    | 4 |

### COOLING SUPPORT

|                 |   |
|-----------------|---|
| Front           | 3x120mm or 2x140mm  |
| Top             | 3x120mm or 2x140mm  |
| Rear            | 1x120mm   |
| Included Fan(s) | 3 (2 x White LED 120mm fans @ front & 1 x White LED 120mm fan @ rear) |

### RADIATOR SUPPORT

|       |                   |
|-------|-------------------|
| Front | ≤ 360mm           |
| Top   | ≤ 240mm (Limited) |
| Rear  | ≤ 120mm           |

### CLEARANCE

|                   |         |
|-------------------|---------|
| MB Tray Clearance | ≤ 20mm  |
| Max GPU Length    | ≤ 390mm |
| Max CPU Height    | ≤ 165mm |
| Max PSU Length    | ≤ 240mm |

### OTHERS

|              |                      |
|--------------|----------------------|
| Dust Filters | Front / Top / Bottom |
|--------------|----------------------|

**Antec**