

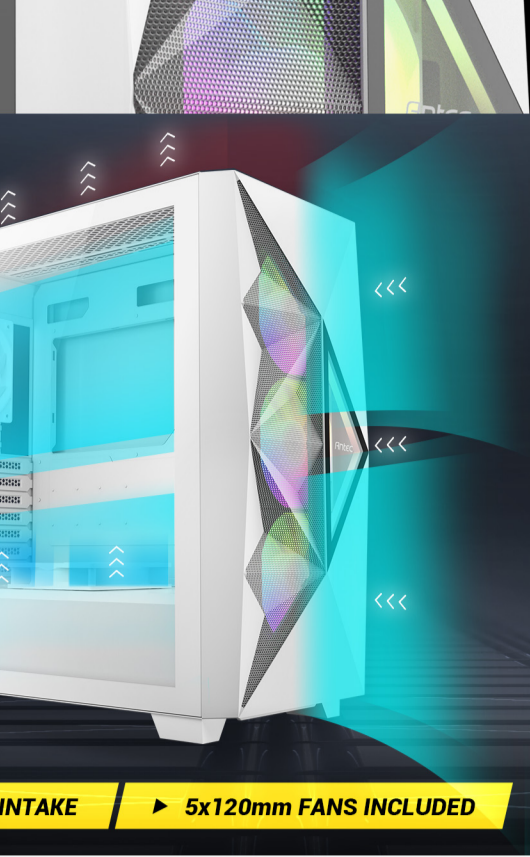


# DF800 FLUX WHITE

THE ULTIMATE THERMAL PERFORMANCE FOR GAMING CASES

## WHY THE NEW COOLING SOLUTION?

When Intel and AMD announced their latest CPUs, they all deliver remarkable performance upgrades and better productivity, it also means the functional requirement of PC equipment needs to be taken to the next level, especially the thermal performance.



To cope with the stress of enhanced heat dissipation, Antec developed a revolutionary structure for airflow, providing an improved and powerful cooling solution for your system.  
**The F-LUX Platform.**



- ▶ DUAL AIRFLOW CHANNEL
- ▶ SIDE PANEL AIR INTAKE
- ▶ 5x120mm FANS INCLUDED

## PATENTED F-LUX PLATFORM - ANTEC'S ORIGINAL COOLING SOLUTION

### What is the F-LUX Platform?

The definition of FLUX is **Flow Luxury**. The F-LUX Platform is a new industry-leading and highly efficient design by Antec featuring an advanced case structure for excellent airflow and 5 x 120 mm fans included. A core element of the design ethos was to enhance GPU cooling performance.



F-LUX Platform will provide massive airflow when the GPU is functioning, enhancing the heat dissipation, and gaming performance. (Flux Platform Patented Number: 11259440)

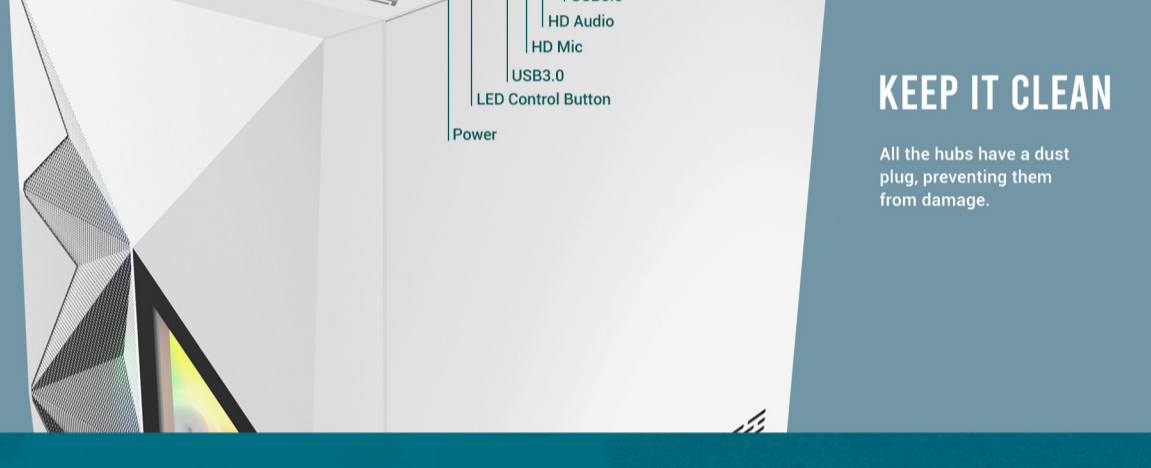
## F-LUX PLATFORM - ANTEC'S ORIGINAL COOLING SOLUTION

5 x 120 mm Fans Included



## SPLASH IT WITH YOUR COLOR

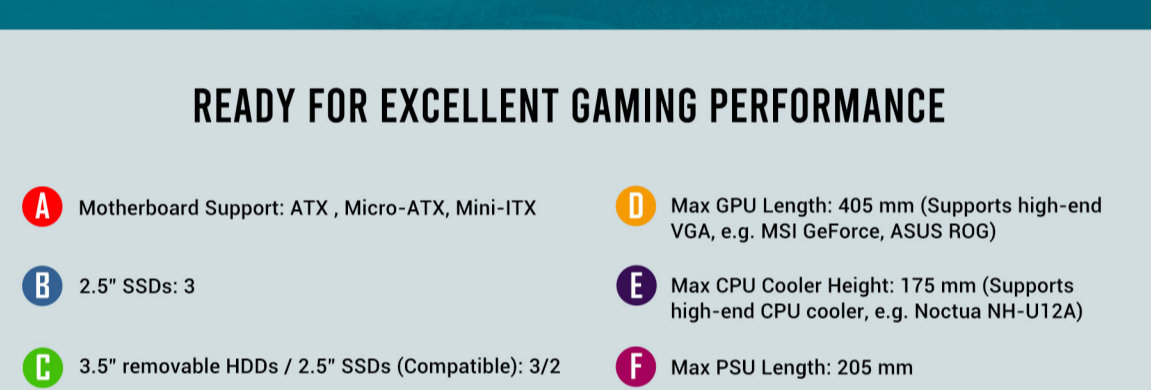
The all-new Dark Fleet DF800 FLUX White Mid-Tower ATX gaming case forms a different visual effect by its geometrical mesh design and mirror surface materials. The DF800 FLUX White provides the best showcase for your gaming gear with its full-view tempered glass side panel



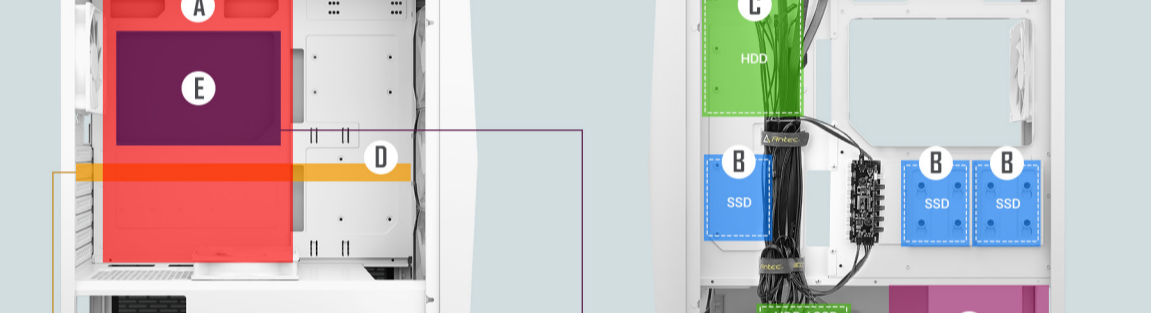
## COLOR YOUR SYSTEM BY BUILT-IN LED CONTROLLER

You only need the LED mode button to control all the addressable LEDs. Or you can sync it with the motherboard to enjoy more custom light effects.

### BUILT-IN LED & PWM FAN CONTROLLER



Sync with the LED control button, supports up to 6 ARGB fans. Sync with the motherboard for 16.8 million possible light effects.



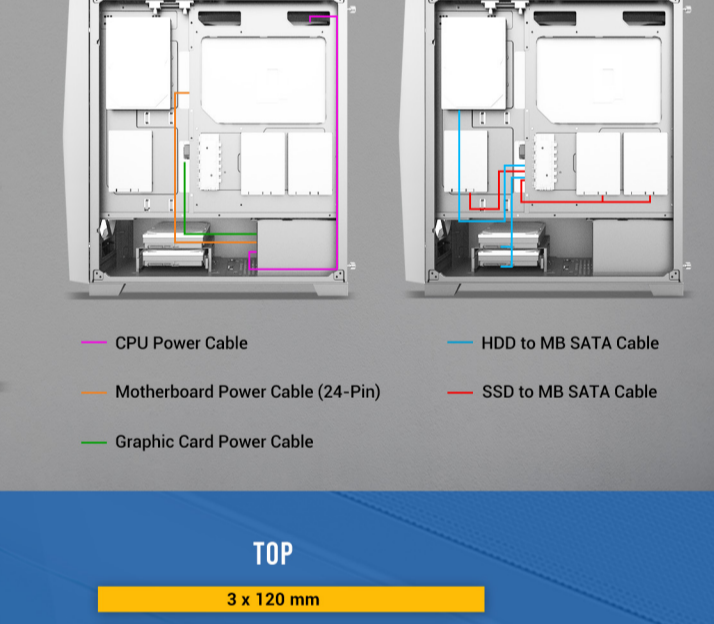
- USB3.0
- HD Audio
- HD Mic
- USB3.0
- LED Control Button
- Power

### KEEP IT CLEAN

All the hubs have a dust plug, preventing them from damage.

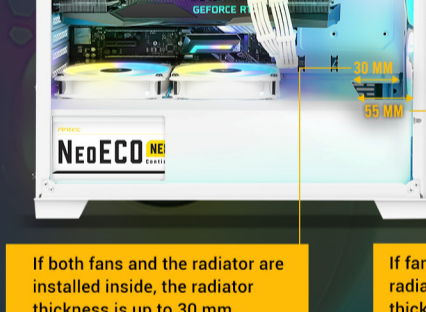
## 4 MM TEMPERED GLASS SIDE PANEL

Tool-free thumbscrew design at the rear of the tempered glass side panel, which gives you quick access to the interior, and enhances the solidity.



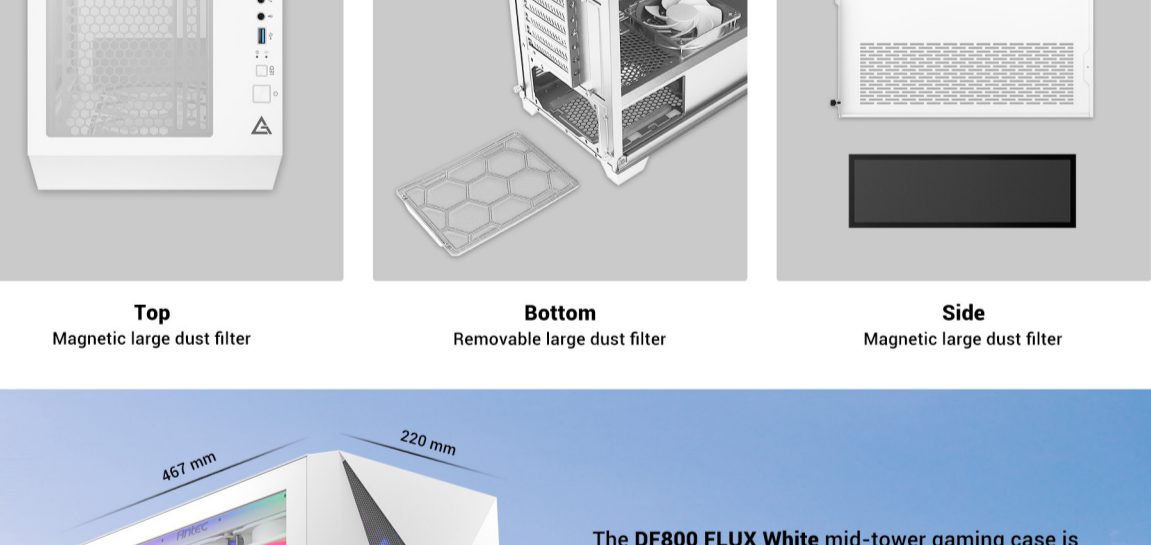
## READY FOR EXCELLENT GAMING PERFORMANCE

- A** Motherboard Support: ATX, Micro-ATX, Mini-ITX
- B** 2.5" SSDs: 3
- C** 3.5" removable HDDs / 2.5" SSDs (Compatible): 3/2
- D** Max GPU Length: 405 mm (Supports high-end VGA, e.g. MSI GeForce, ASUS ROG)
- E** Max CPU Cooler Height: 175 mm (Supports high-end CPU cooler, e.g. Noctua NH-U12A)
- F** Max PSU Length: 205 mm



## SUFFICIENT SPACE FOR CABLE MANAGEMENT

### SUGGESTION OF CABLE MANAGEMENT

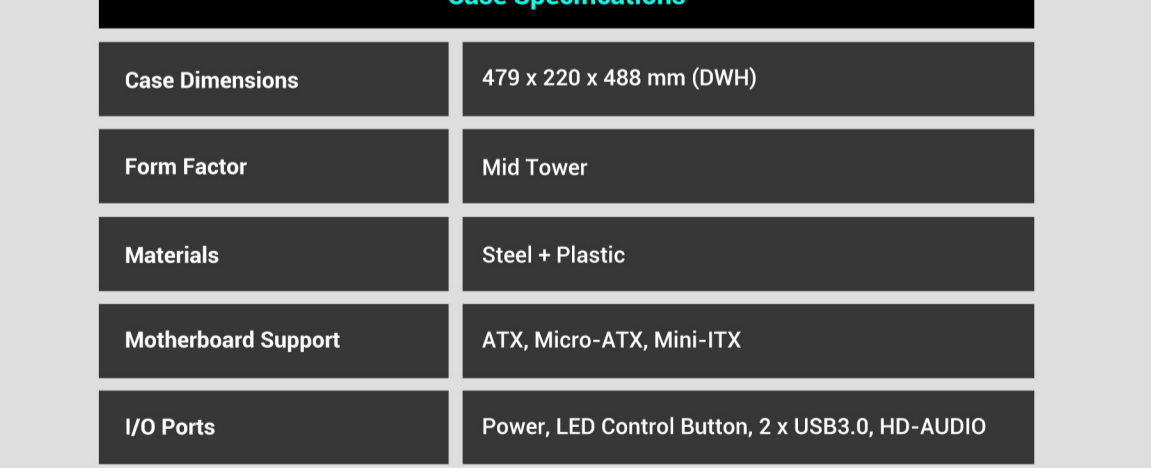
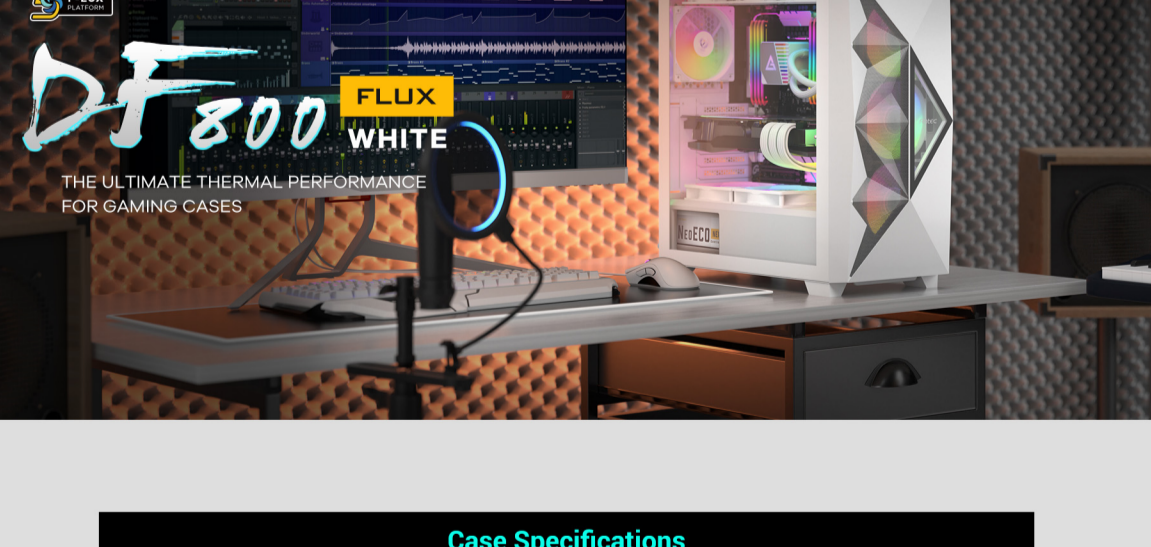


FRONT: 34.5 mm REAR: 26.5 mm

- CPU Power Cable
- Motherboard Power Cable (24-Pin)
- Graphic Card Power Cable
- HDD to MB SATA Cable
- SSD to MB SATA Cable

## ULTIMATE THERMAL PERFORMANCE

Supports up to 9 fans.



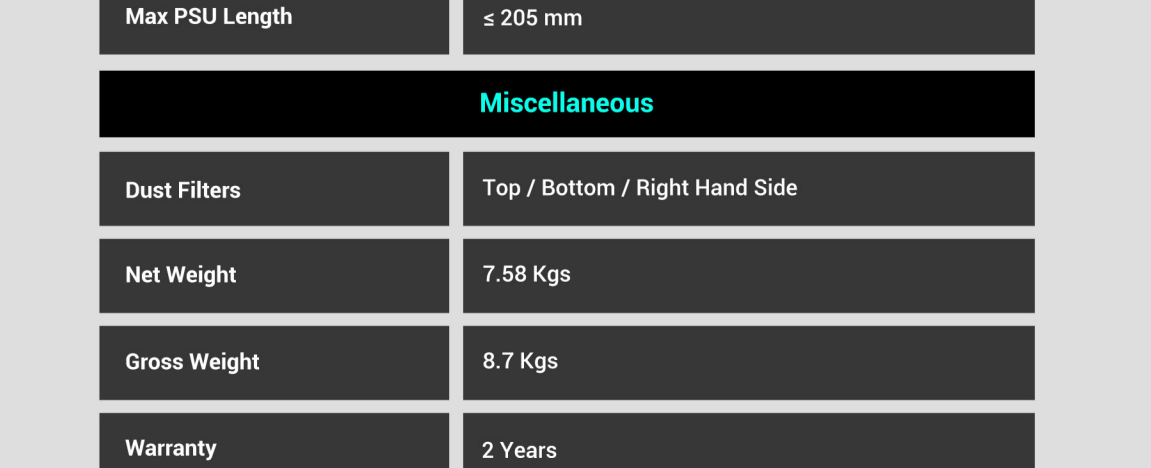
### MAKE IT COOLER

DF800 FLUX White keeps your gear with room for up to 360 mm radiator in the front & top.



If both fans and the radiator are installed inside, the radiator thickness is up to 30 mm. If fans are installed outside and the radiator is installed inside, the radiator thickness is up to 55 mm.

## EASY TO CLEAN



Top Magnetic large dust filter

Bottom Removable large dust filter

Side Magnetic large dust filter



The DF800 FLUX White mid-tower gaming case is well-equipped with an industry-leading design of unique ventilation, taking the Antec Dark series gaming cases to the next generation.

Mirror Surface Effect

Net Weight: 7.58 Kgs  
Gross Weight: 8.7 Kgs

## Case Specifications

Case Dimensions	479 x 220 x 488 mm (DWH)
Form Factor	Mid Tower
Materials	Steel + Plastic
Motherboard Support	ATX, Micro-ATX, Mini-ITX
I/O Ports	Power, LED Control Button, 2 x USB3.0, HD-AUDIO
Side Panel	4 mm Tempered Glass Side Panel

## Expansion & Drive Bays

Expansion Slots	7
3.5" / 2.5" (Convertible)	3 / 2
2.5"	3

## Fan Support

Front	3 x 120 mm / 3 x 140 mm
Top	3 x 120 mm / 2 x 140 mm
Power Supply Shroud	2 x 120 mm
Rear	1 x 120 mm
Included Fan(s)	3 x 120 mm ARGB fans in front 1 x 120 mm fan (Reverse Fan) on PSU shroud & 1 x 120 mm fan in rear

## Radiator Support

Front	120 / 240 / 280 / 360 mm (≤ 55 mm thickness when fans are installed outside of front panel) (≤ 30 mm thickness when fans are installed inside of front panel)
Top	120 / 240 / 280 / 360 mm
Rear	120 mm

## Clearances

Max GPU Length	≤ 405 mm
Max CPU Cooler Height	≤ 175 mm
Max PSU Length	≤ 205 mm

## Miscellaneous

Dust Filters	Top / Bottom / Right Hand Side
Net Weight	7.58 Kgs
Gross Weight	8.7 Kgs
Warranty	2 Years
UPC#	0-761345-80084-6