

Performance 1 FT White

Full-Tower E-ATX Highly Compatible PC Case

SYSTEM STATUS WITH A GLANCE

TEMPERATURE DISPLAY

By pressing the switch button on the I/O panel, users can glance at the temperature of the CPU and GPU on the temperature display.

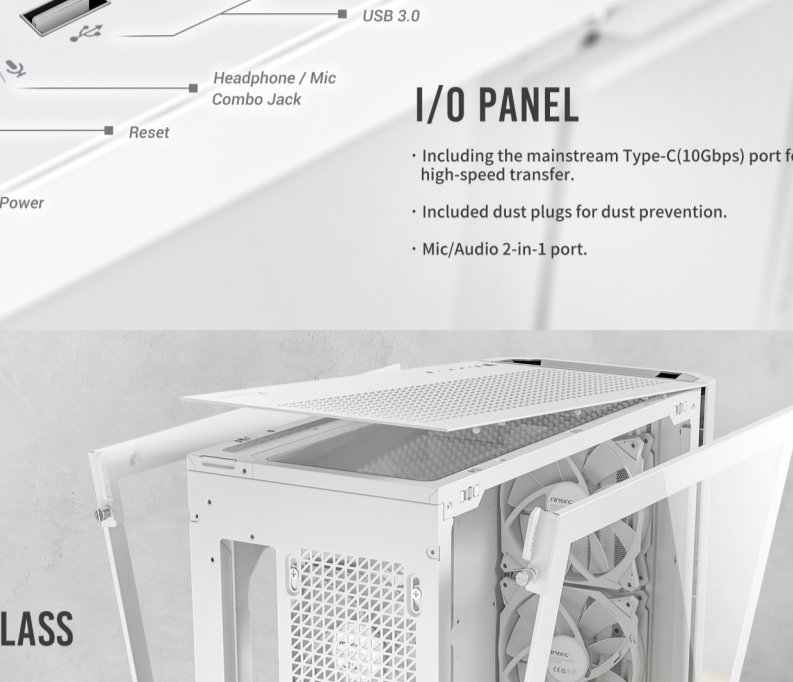
The temperature display can be switched from CPU temperature to GPU temperature or turned off via the switch button.

Attention: The Antec iUnity software must be installed.

ANTEC iUnity

The Antec iUnity provides instant data on PC specs, loads, and usage.

[Download](#)



I/O PANEL

- Including the mainstream Type-C (10Gbps) port for high-speed transfer.
- Included dust plugs for dust prevention.
- Mic/Audio 2-in-1 port.

PC SHOWCASE

4MM TEMPERED GLASS SIDE PANEL

Both side panels adopt tempered glass for better PC showcase visual effects.



EVERYTHING ORGANIZED

CABLE MANAGEMENT ON POINT

2 cable covers are included for beautifying the cable management area.



There are ten sets of velcro straps for easy cable management.

- Three sets of velcro straps for fan & I/O cable routing.
- Five velcro straps for hardware and power supply cables.
- Two velcro straps at the rear for rear I/O cable routing.

Clearance for Cable Management: 30mm

EASY INSTALLATION

Removable Top Cooling Bracket.



PRE-INSTALLED 4 FANS OF 30MM THICKNESS

STORM T3 PWM FAN

3 x Storm T3 140mm PWM Fans at the Front.
1 x Storm T3 120mm PWM Fan at the Rear.

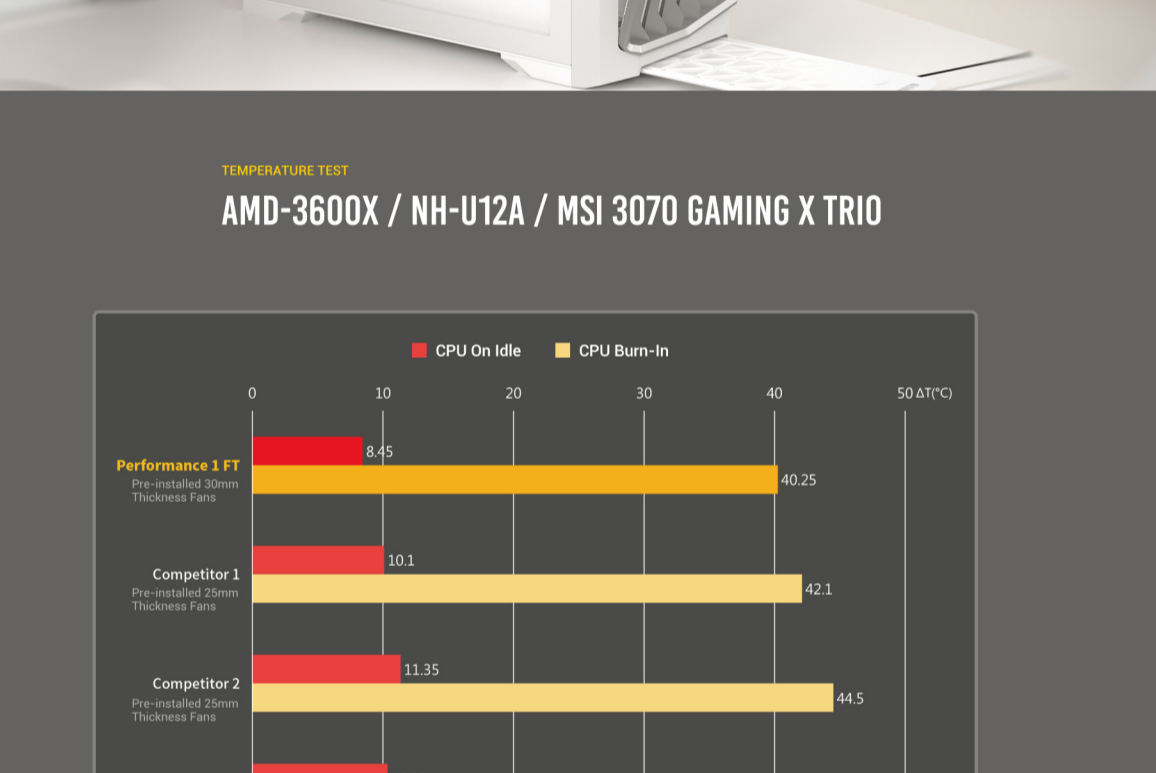
A 1-to-3 fan splitter cable with the PWM function is included.



STORM T3 PWM FAN

The Storm T3 Fan of 30mm thickness comes with thicker and longer fan blades, efficiently increasing the air intake.

The PWM function easily reaches the balance between cooling and silence.

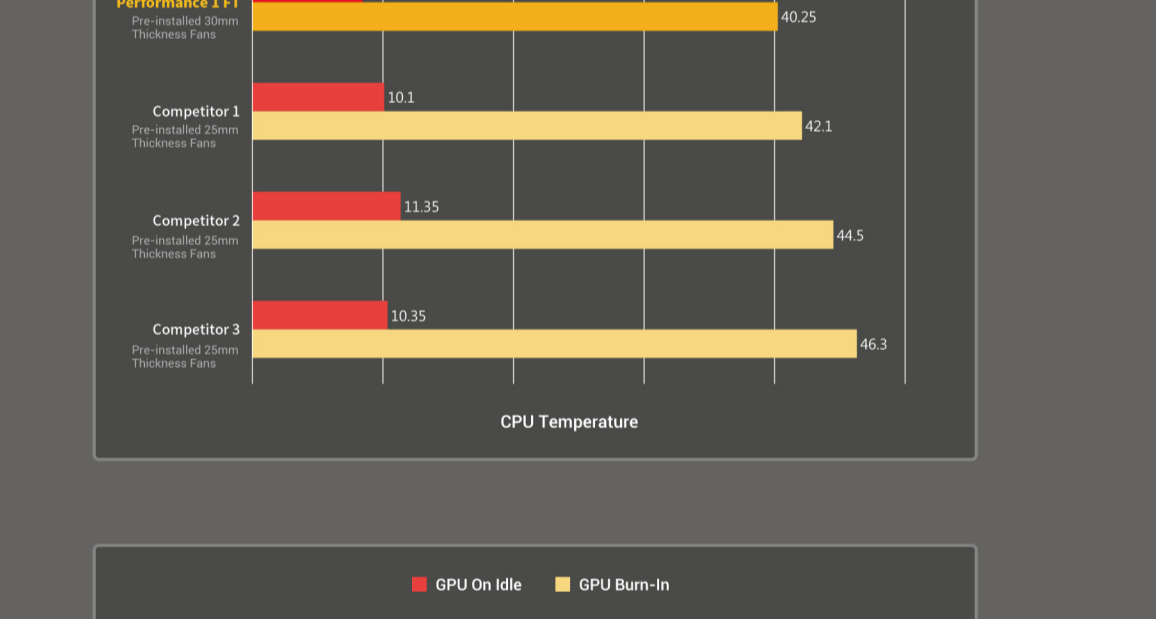


BEST DUST PREVENTION DESIGN

EXQUISITE STEEL MESH

The mesh front panel adopts the 1.2mm vent holes and the magnetic & clip-on design with easy access.

1.2mm

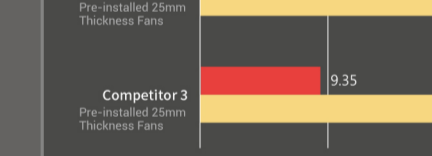


POWERFUL AIRFLOW PATH DESIGN

BEST AIRFLOW PATH FOR GPU COOLING

Airflow-enhancing mesh front panel provides massive air.

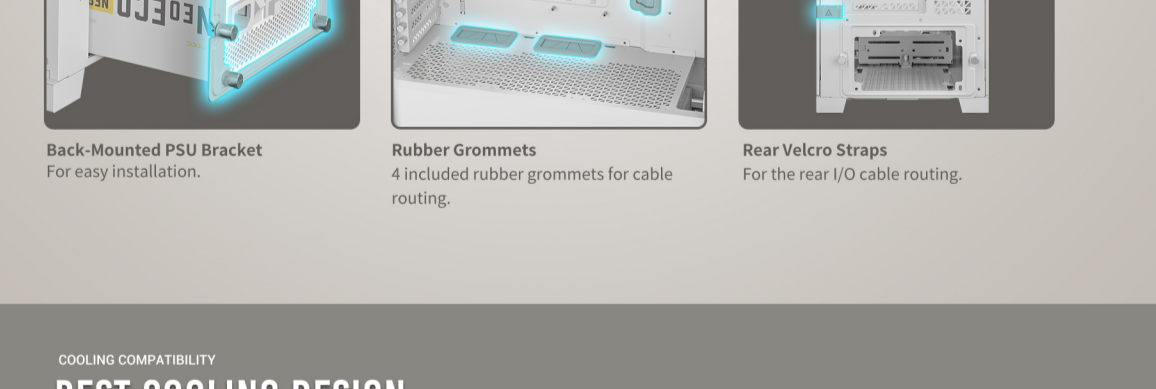
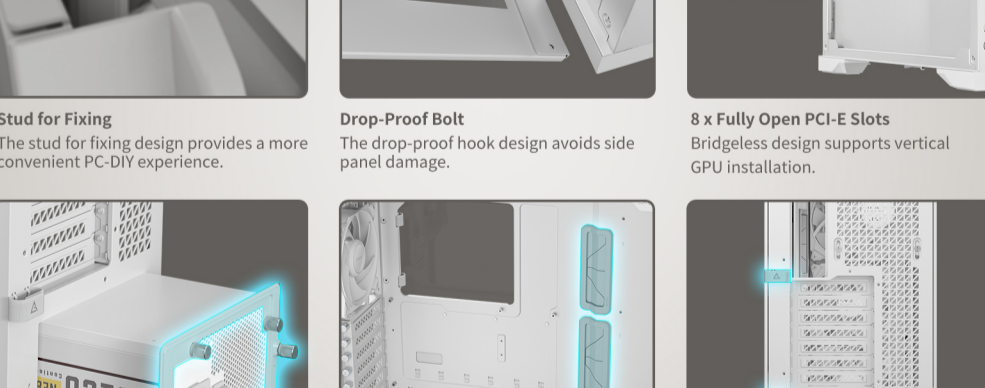
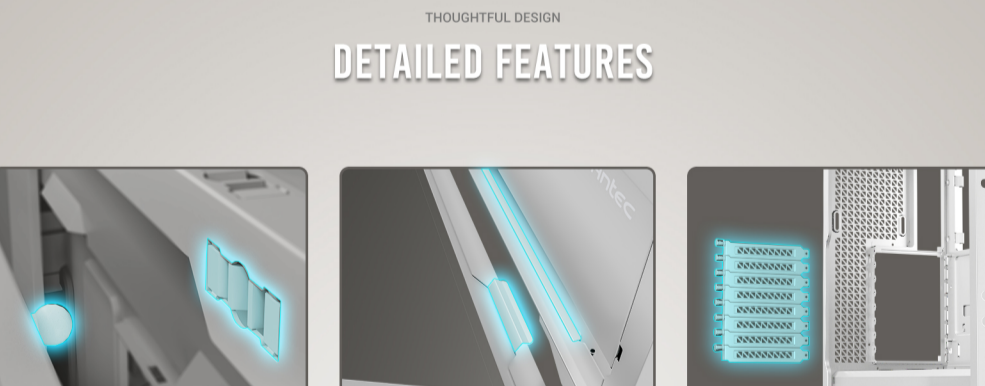
Ample mesh at the bottom with fans (optional) on the meshed PSU shroud provides the best performance for the GPU cooling.



- Top: Magnetic dust filter
- Front: Magnetic & clip-on dust filter
- Bottom: Full-sized pull-out dust filter.

TEMPERATURE TEST

AMD-3600X / NH-U12A / MSI 3070 GAMING X TRIO



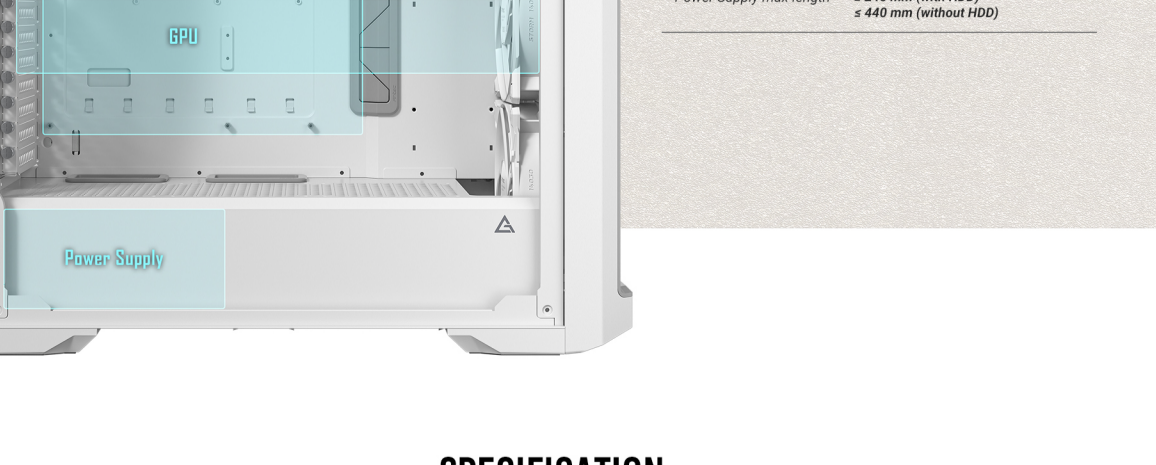
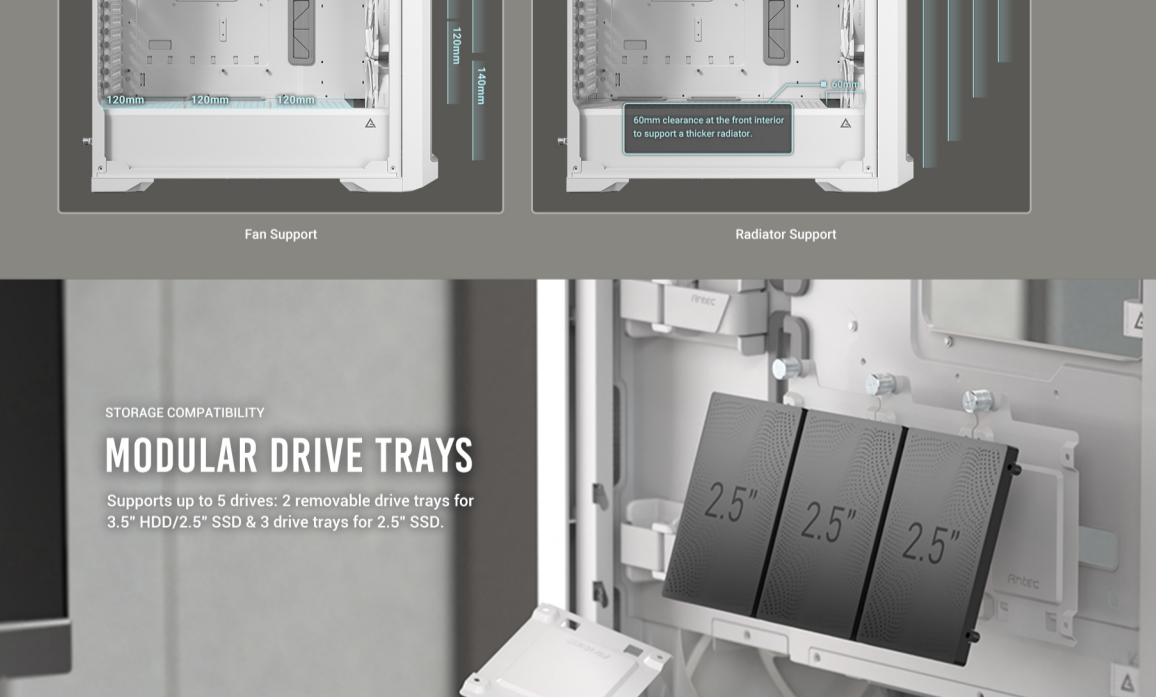
HIGHLY COMPATIBLE E-ATX PCB CASE

SUPPORTS RTX 40 SERIES GRAPHICS CARDS

Full-tower PC case in 230mm width supports the up-to-date 40 Series GPUs and high-end PC components.

THOUGHTFUL DESIGN

DETAILED FEATURES



CASE COMPATIBILITY	
Motherboard support	E-ATX(≤ 285 mm), ATX, Micro-ATX, ITX
CPU cooler max height	≤ 175 mm
GPU max length	≤ 400 mm
Power Supply max length	≤ 245 mm (with HDD) ≤ 440 mm (without HDD)

SPECIFICATION

Main Spec		Radiator Support	
Motherboard Support	E-ATX(Up to 285 mm), ATX, Micro-ATX, ITX	Front	120/140/240/280/360/420mm
Form Factor	Full Tower	Top	280
Case Material	Steel, Plastic, Glass	Rear	120mm
Side Window Material	4mm Tempered Glass (Both Sides)	Expansion Slots	
I/O Ports	Power, Reset, USB 3.0 x 2, Type-C 10Gbps x 1, Headphone/Mic Combo Jack x 1, Temp. Display Switch x 1	Standard	8
Case Dimensions (DxWxH)	522 x 230 x 522 mm	Drive Bays	
Box Dimensions (DxWxH)	595 x 305 x 603 mm	2.5"	3
Compatibility & Clearances		3.5"/2.5" Drive Mounts	2/2
CPU Cooler Max Height	≤ 175 mm	General	
GPU Max Length	≤ 400 mm	Dust Filter	Front, Top, Bottom
Power Supply Max Length	≤ 245 mm (with HDD) ≤ 440 mm (without HDD)	Net weight	12.55 kg
Cable Routing Space	≤ 30 mm	Gross weight	14.85 kg
Fan Support		Warranty	2 years
Front	120 mm x 3 / 140 mm x 3	UPC#	0-761345-10091-5
Top	120 mm x 3 / 140 mm x 3		
Rear	120 mm x 1		
Power Supply Shroud	120 mm x 3		
Included Fans	140 mm Storm T3 x 3 (in front) 120 mm Storm T3 x 1 (in rear) *Pre-installed Storm T3 PWM fan specs vary from the retail version.		